

Wildlands and Woodlands



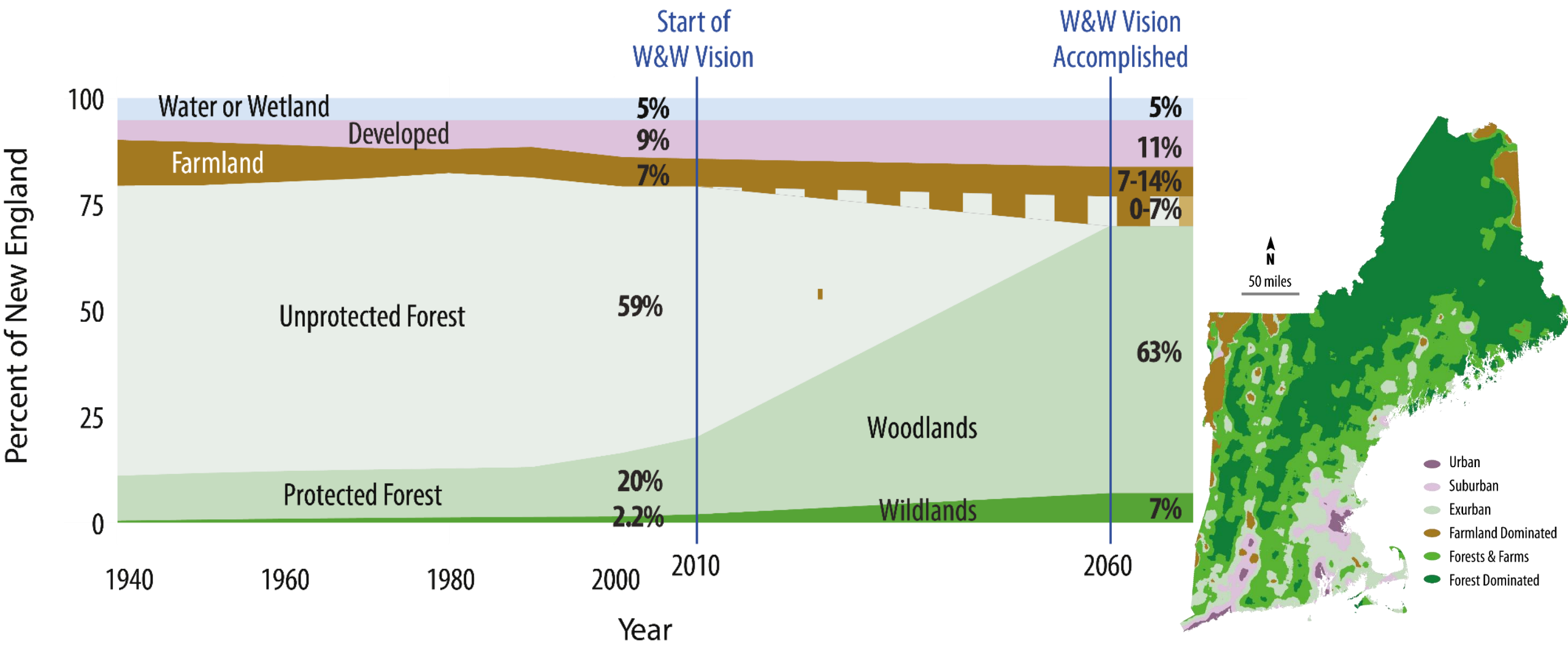
Farmlands and Communities

Broadening the Vision for New England

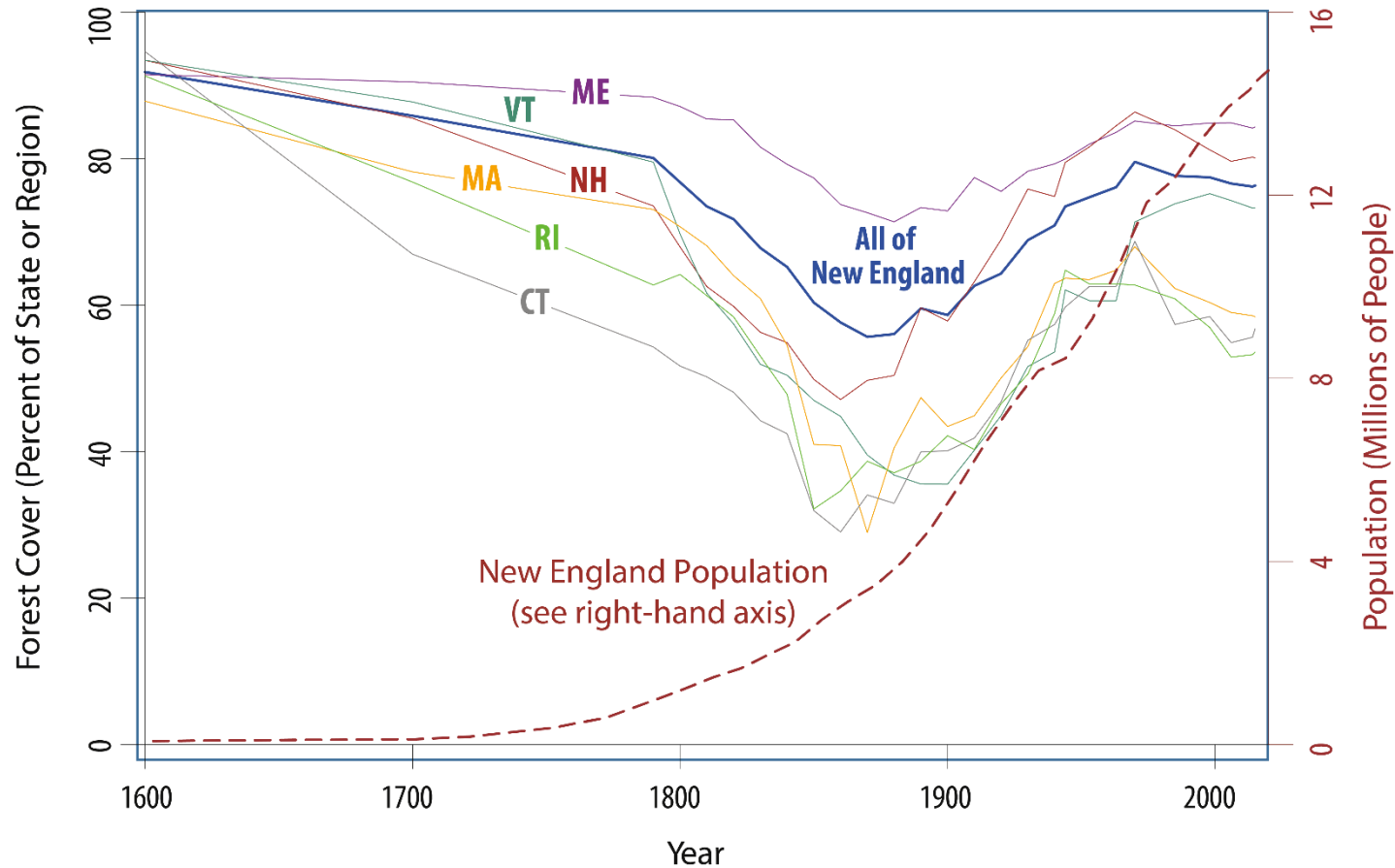


A Bold Vision for New England

Wildlands & Woodlands Vision for New England in 2060



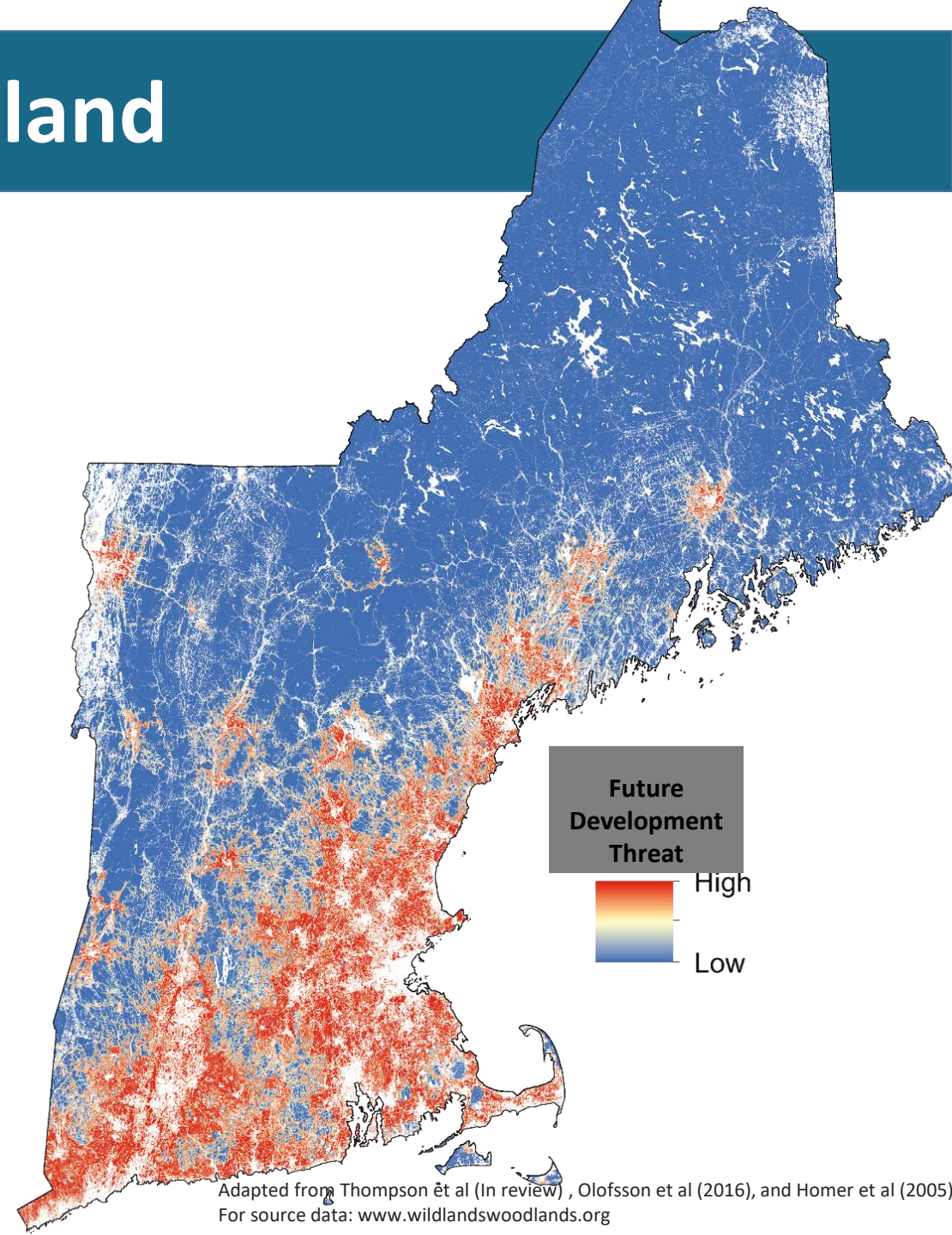
New England Forests: A Changing Landscape



Forest cover trends and population trends in New England.



Disappearing Forests and Farmland



Adapted from Thompson et al (In review), Olofsson et al (2016), and Homer et al (2005)
For source data: www.wildlandswoodlands.org

A Call to Action

- Accelerate land protection;
- Manage more land, ecologically and sustainably;
- Grow smart in cities, suburbs, and towns to reduce forest conversion;
- Support strong rural economies;
- Increase funding for land protection; and
- Reduce consumption and conserve resources

Wildlands and Woodlands

Farmlands and Communities

CONNECT

*Collaborations are
reigniting the pace of
land protection.*



The W&W vision calls for **voluntary**, community-driven conservation to protect 63% of New England as working forest, 7% as wildlands, and 7% as farms by 2060. **Join us.**

@WWConserve
www.wildlandsandwoodlands.org




We are no longer saving land from people, we are saving land with people.

– Rand Wentworth





A woman with white hair, wearing a black blazer and a silver necklace, is speaking at a wooden podium. She has her hands raised in a gesturing motion. On the podium is a yellow laptop with an Apple logo and a red 'CH' sticker. A microphone is positioned in front of her. The background is a wood-paneled wall.

The passion that you hold in New England is what I see across the country. And it gives me hope.

- Terry Tempest Williams

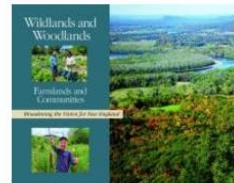
Wildlands and Woodlands
Farmlands and Communities

Broadening the Vision for New England

- Overview
- About Us
- W&W Vision Reports
- FAQ

W&W Vision Reports

The W&W regional vision was inspired by and evolved from *Wildlands and Woodlands: A Vision for the Massachusetts Landscape*, released in 2005. In 2010 and 2017, the vision was broadened to encompass all of New England, from rural communities to densely populated cities.



NEW REPORT RELEASED SEPTEMBER 19, 2017, WITH BROADENED VISION FOR THE NEW ENGLAND LANDSCAPE.

Full report: [Wildlands and Woodlands, Farmlands and Communities: Broadening the Vision for New England \(.pdf\)](#)

[Report summary](#)

Note: For hard copies of the report or summary, email info@wildlandsandwoodlands.org.

➤ Video News Release



- [Complete press-kit for media](#) (state-by-state press releases, photos, b-roll...)
- [Authors](#)
- [Report Maps and Figures](#)





OUTDOOR LIVING & SPORTING GOODS

HYDRO FARM

BUILDING MATERIAL
LUMBER • MILLWORK
PLUMBING • ELECTRICAL
LAWN AND GARDEN

HAND & POWER TOOLS
PAINT • HOUSEWARE
AUTOMOTIVE
BUILDERS HARDWARE

40L
BLACK DI
SUN LOWER FED
\$8.9

Richardsons

Proudly Serving
Our Community
Since 1948

Hardware

THAT'S
PRO.

valspar paint

LIKE US ON
FACEBOOK

W
Rocks

PLAYSTAR

PRO-MIX

HELP
IS JUST
AROUND THE
CORNER

RE

PATTEN
LUMBERMEN'S
MUSEUM
RT. 159W
MAINE LOGGING
HISTORY
1000'S OF EXHIBITS















Susan Adams

Elliotsville Plantation Inc.

Recreation Manager

Volunteer VC KAWW

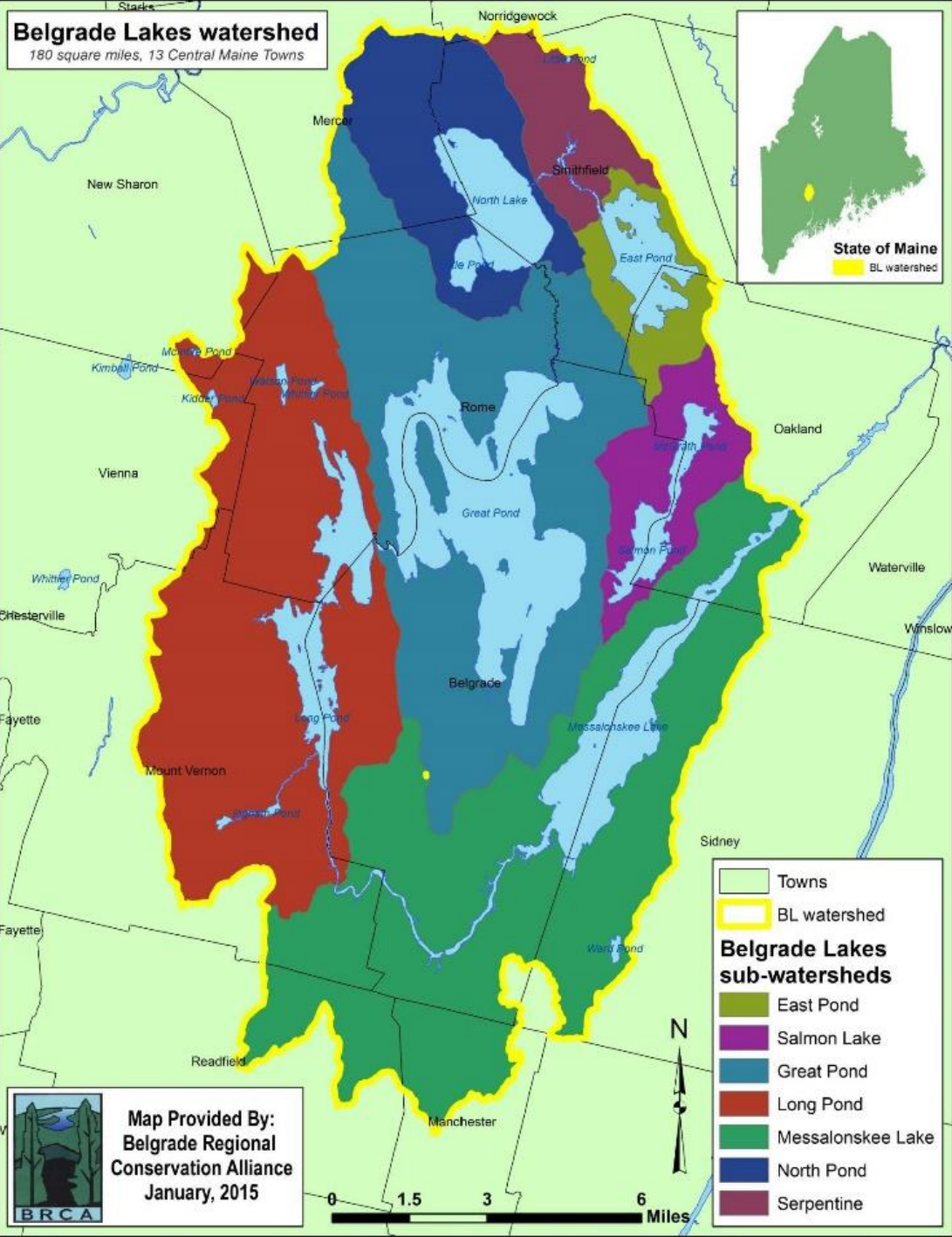
Lunksoos@gmail.com

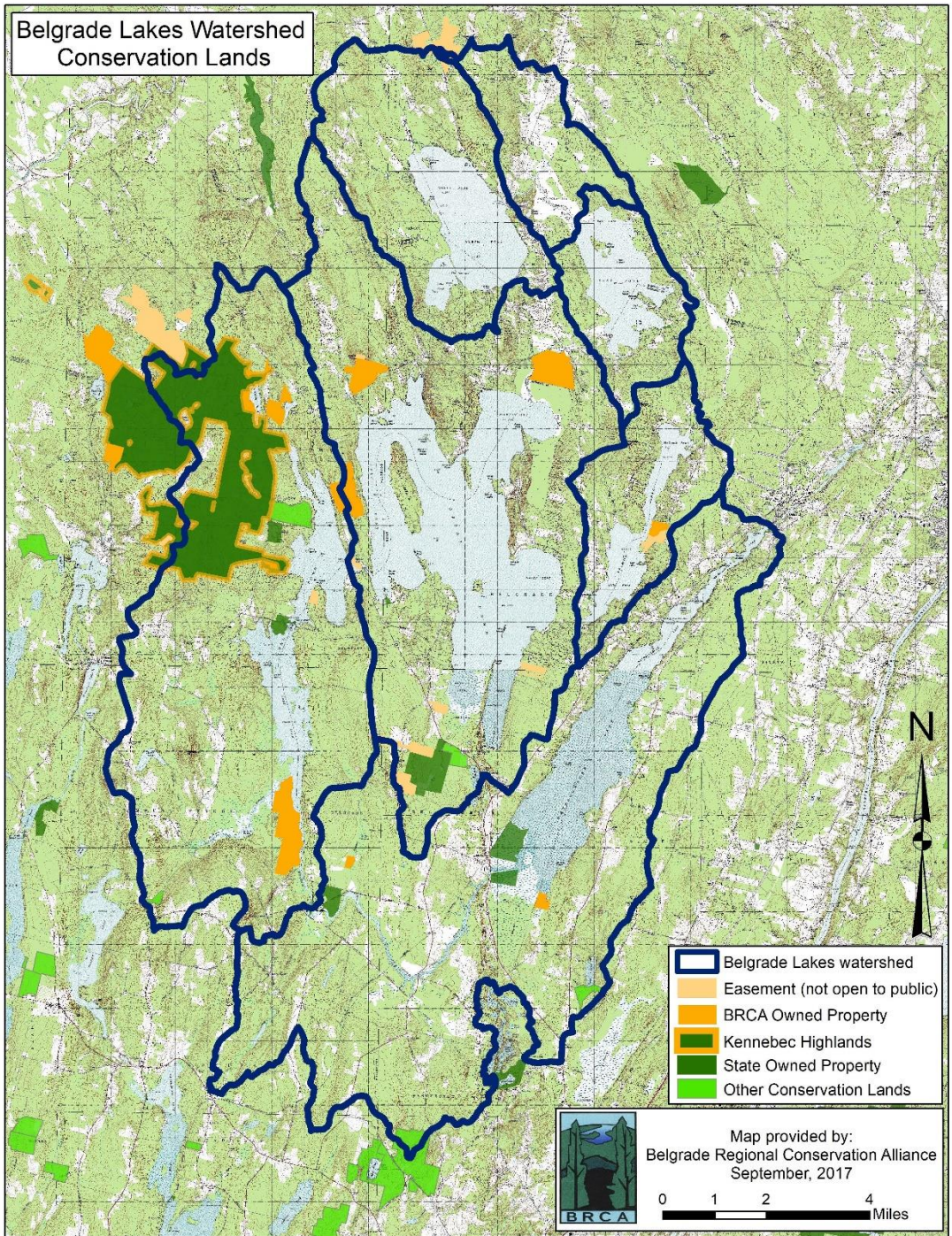


Conservation Partnerships

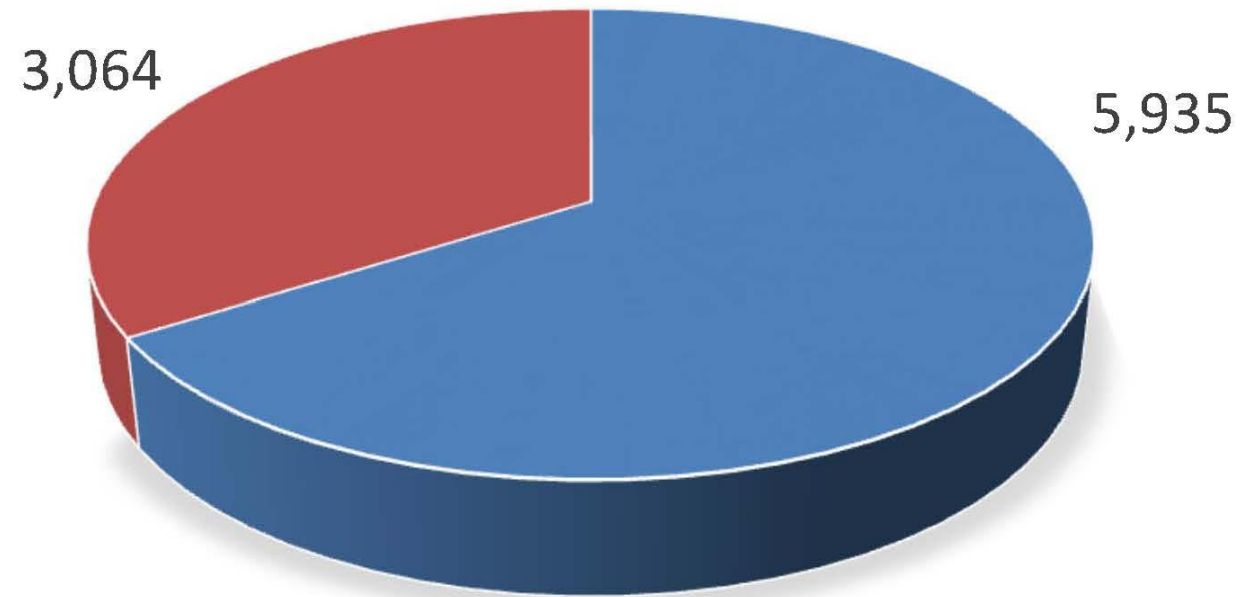
November 16, 2017

Charlie Baeder





BRCA Land Trust - 8,999 Acres



■ Kennebec Highlands ■ BRCA

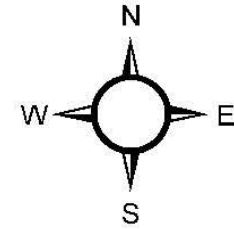
319 Program Funding – 2017 Awards

- The 319 Program refers to the US Environmental Protection Agency (EPA) Clean Water Act grant program that funds work to reduce watershed erosion to improve water quality.
- Administered in Maine by the Maine Department of Environmental Protection (DEP), the program funds projects in watersheds that have EPA-approved management plans. In the Belgrade Lakes watershed, East Pond and Long Pond have EPA- approved management plans.
- 319 Program funding is available to homeowners, road associations, businesses, and towns for erosion control projects that improve water quality.
- Since 1999, BRCA has received 319 grant funding of \$650,000 resulting in over \$1.5 million in erosion control projects throughout the Belgrade Lakes watershed.
- **319 Program funding – 2017 Awards**
 - **\$232,000 for East Pond Alum Treatment**
 - **\$80,406 for North Pond NPS Watershed Protection Project**

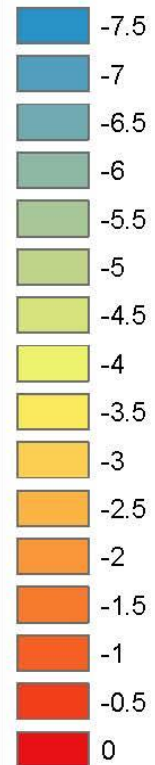
Long Pond 319 NPS Watershed Grant 2016



East Pond Bathymetry Smithfield/Oakland, Maine

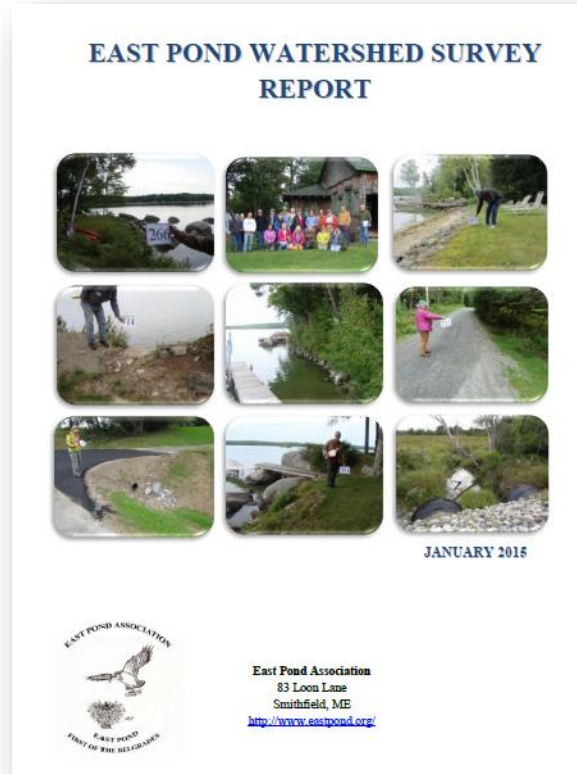


Depth (meters)



Map Created By:
Belgrade Regional
Conservation Alliance
August, 2015

WATERSHED MANAGEMENT PLAN UPDATE



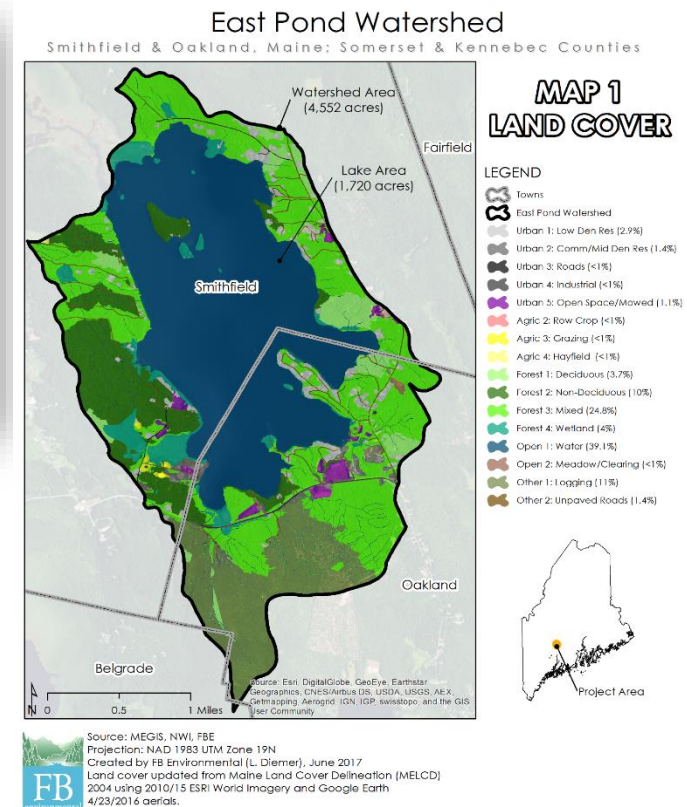
Watershed Survey



LakeSmart & YCC



Monitoring



Modeling



Figure 2. Alum application Grand Lake St. Mary's, Ohio, June 2011.



Figure 5. Alum application Green Lake, Seattle, Washington, March 2004.

Aerial April 23, 2016



Partnership Opportunities

Academic

- Limnology, ecology, economics, government, sociology
- Outdoor classrooms
- Wood sourcing

- Colby College
- U Maine Farmington
- U Maine Orono
- Unity College

Partnership Opportunities

Roads

- Erosion control
- Road Associations (40+)
- Maine DOT (Department of Transportation)
- Kennebec Soil & Water District

Partnership Opportunities

Sportsmen

- Recreation
- SAM – Sportsmen's Alliance of Maine
- Local snowmobile clubs
- Hunters
- Fishermen

Partnership Opportunities

Government

Maine state agencies

- Maine DEP
 - Water quality
 - Invasives
 - Erosion control
 - SLZ – Shoreland Zoning
- Maine IFW
 - Invasives
- Maine DACF (Ag, Conservation, Forestry)
 - Land for Maine's Future
 - Recreation (eg, sportsmen)
- Maine DOT (Department of Transportation)
 - Roads
 - Culvert bond – MDOT, MDEP, MDMR
 - Only state bond passed in 2017 – tied to MDOT funding
- Maine DMR Marine Resources
 - Diadromous fish passage, clam flat closures

Partnership Opportunities

Government

Towns

- 13 watershed towns, 180 mi²
 - Property taxes
- Funding
 - Erosion control, Invasives
- Planning
- Ordinances and enforcement

Partnership Opportunities

Businesses

- Camps
 - East Pond project
- Building supplies
 - 35% seasonal homes
- Car dealership
 - Trucks
- JOBS, JOBS, JOBS
 - Construction
 - Real estate
 - Home maintenance
 - Boating
 - Recreation – hunting, fishing
 - Hospitality, food and beverage
 - Tourism
 - #1 industry in Maine, \$15 billion

Partnership Opportunities

Conservation

- Lake associations – local, regional, statewide
- Statewide – MCHT, TNC, NRCM, Maine Audubon
- Regional – RCP
- National - LTA

Partnership Opportunities

Health Care

- Obesity, diabetes trends; mental health
- Employees – Maine General Health: one of the biggest employers in our county of 100,000 residents – 3,000 employees
- Patients – health outcomes
- Land Trust Alliance – people value what they know – they need to get outdoors, on the land (and water) to experience and value it



"Hungry people make poor conservationists."

- Matt Polstein, New England Outdoors Center

"Engaging forest owners and engaging people in cities and towns is going to be one of the harder things we need to do as we move forward ... we need to spend time introducing others what it's like to be on land if they don't own land themselves, and we need to inspire people in cities and towns to be concerned about what's happening in our rural areas."

- Jane Difley, Society for the Protection of New Hampshire Forests